

St. Charles Preparatory School

THE DISTINCTIVE LEADER IN CATHOLIC EDUCATION

2021 – 2022 | School Profile



SCHOOL CODE: 361595

ACCREDITATION: State of Ohio & OCSAA

SCHOOL OVERVIEW:

- St. Charles Preparatory School represents the breadth of economic and ethnic backgrounds from the greater Columbus area.
- Our state of the art twenty-three acre campus is open to any young man who wishes to pursue study in this challenging and faith-focused environment.
- Since it's founding in 1923, St. Charles Preparatory School has nurtured the minds and hearts of scholars, priests, entrepreneurs, executives, artists, musicians, doctors, legal professionals, and community leaders.

CLASSICAL EDUCATION:

- A St. Charles classical education is designed to provide students with the intellectual and moral facility to think independently. Critical thinking, problem solving, questioning, and research are emphasized throughout a rigorous curriculum.
- Beyond the mere acquisition of information, the school strives to cultivate lifelong learners—individuals who are motivated to continue learning and who have the skills and discipline to do so.
- While a liberal arts background is primary at St. Charles, special talents and inclinations are nourished and promoted.

FACULTY:

- 37 teaching faculty
- Average years of teaching experience: 13.9 years, 13.26 at St. Charles
- 80% hold advanced degrees (Masters/Doctoral)



Students from **57** different zip codes

102 middle/grade schools are represented

DID YOU KNOW...

- St. Charles is ranked #2 in the state for test score averages by Gerber Analytics.
- St. Charles seniors outperformed their projected ACT score from the freshman Pre-ACT by an average 3.2 ACT points when they took the state issued ACT as juniors.

FINANCIAL AID:

- 60% of St. Charles students receive need-based or merit-based financial aid.
- St. Charles will award \$1.4 million in need-based financial aid and \$381,683 in academic aid in 2021-2022.

OUR MISSION

Saint Charles is an all-boys college preparatory Catholic high school of the Diocese of Columbus, Ohio, that instills in its graduates the importance of prayer, faith, service, character and hard work in an environment that values diversity, accountability and excellence and that creates an enduring tradition of brotherhood.

ESTABLISHED
1923

GRADES TAUGHT
9 – 12

STUDENTS ATTENDING
522

AVG. ACT SCORE
28.1

STUDENTS SCORING
3 OR HIGHER (PASSING)
ON AP EXAMS
81%

STUDENTS RECEIVING
FINANCIAL AID
60%

STUDENTS DEEMED
COLLEGE-READY BY THE
MOST RECENT OHIO
BOARD OF REGENTS
REPORT
97%

* all data reported is the most recent official data available as of Sept. 1, 2021

COLLEGE GUIDANCE STAFF:

Mr. Jeff Stahlman
College Counselor
jstahlman@scprep.org

Mr. Zach Wright
Freshman Advisor
zwright@scprep.org

Ms. Trisha Smith
Guidance Secretary
guidance@scprep.org

Ms. Kristen Dickerson
School & College Counselor
kdickerson@scprep.org

Mr. David Breckenridge
Research Programming & Military Outreach
dbreckenridge@scprep.org

College Guidance Office
p. 380.209.2223

James Lower
Principal

John O' Neil
Academic Dean

Richard Ey
Dean of Students

David Lawler
Athletic Director

Ned Gruber
Dean of Learning
Formation

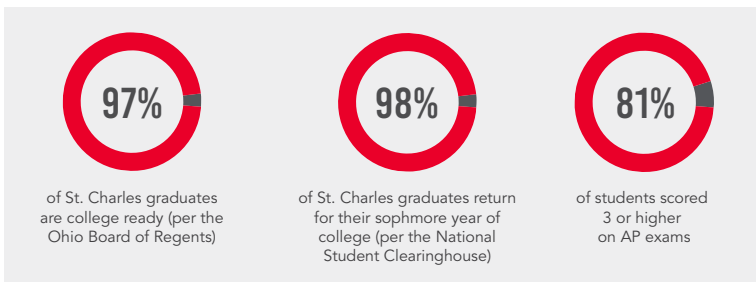
St. Charles Preparatory School
2010 E. Broad Street
Columbus, OH 43209-1665
p. 380-209-2222
www.stcharlesprep.org

GRADES AT ST. CHARLES PREPARATORY SCHOOL

Our teachers value rigor and challenge.

A recent analysis shows the following grade information:

- It is rare for students to graduate with all grades of A on a transcript. Nearly all of the top 5% of our graduates over the past five years have received one or more grades of B.
- Students graduating in the top 10% of our senior class will often have several grades of B and possibly a C on their transcript.
- Our students have outperformed their projected ACT scores by 3.2 ACT points from 9th grade through 11th grade. This data is from comparison of projected ACT scores from the 9th grade Pre-ACT to the state of Ohio issued ACT in junior year and reflects all students.



DISTINCTIVE FEATURES OF THE ST. CHARLES CURRICULUM

Students at St. Charles do not have the option to take an AP course prior to junior year, except under unique circumstances.

- **FOREIGN LANGUAGE**
 - Level three Latin is AP Latin.
 - Level four Latin 2101 taken at Ohio State University.
- **MATHEMATICS**
 - Students with an 85 in Algebra II/Honors Algebra II go directly to AP Calculus AB.
 - AP Calculus BC and AP Statistics are taught as one combined class.
- **SCIENCE**
 - Chemistry and Physics are taught at a true Honors level because all students complete basic Chemistry and Physics as freshmen.
 - All students who take AP Physics take the AP Physics 1 and 2 exams, many will take Physics C (E+M) and Physics C (Mech).
 - For students to take an AP Science course (AP Biology, AP Chemistry, or AP Physics) they must take the prerequisite course in that subject prior to the AP course.
- **ENGLISH**
 - All juniors take AP English Language.

AP CLASSES AT ST. CHARLES:

- | | |
|--------------------------|----------------------------------|
| AP BIOLOGY | AP ENGLISH LITERATURE (12) |
| AP CALCULUS AB | AP LATIN |
| AP CALCULUS BC | AP PHYSICS (level 1 and 2 exams) |
| AP CHEMISTRY | AP STATISTICS |
| AP COMPUTER SCIENCE A | AP US HISTORY |
| AP ECONOMICS | AP WORLD HISTORY |
| AP ENGLISH LANGUAGE (11) | |

HONORS COURSES AT ST. CHARLES:

- HONORS ALGEBRA 2
- HONORS CHEMISTRY
- HONORS GEOMETRY
- HONORS PHYSICS

	9	10	11	12
ENGLISH <i>4 units required</i>	Freshman English	Sophomore English	AP English Language	Senior English, AP English Literature
MATH <i>4 units required</i>	Algebra 1 Geometry, Honors Geometry	Geometry, Honors Geometry, Algebra 2, Honors Algebra 2	Algebra 2, Honors Algebra 2, Pre-Calculus	Pre-Calculus, AP Calculus AB, AP Calculus BC, AP Statistics
SCIENCE <i>4 units required</i>	Introduction to Physics and Chemistry	Biology	Honors Chemistry	Honors Physics, AP Biology, AP Chemistry, AP Physics
SOCIAL STUDIES <i>3 units required</i>	U.S. History	U.S. Government and Economics		World History, AP U.S. History, AP Economics, AP World History
FOREIGN LANGUAGE <i>4 units required (2 in Latin required)</i>	Latin 1	Latin 2	AP Latin French 1 Spanish 1	Ohio State Latin 2101 French 2 Spanish 2
RELIGION <i>4 units required</i>	Freshman Religion	Sophomore Religion	Junior Religion	Senior Religion
COMPUTER SCIENCE	—	—	AP Computer Science	AP Computer Science
FINE ARTS <i>1 unit required</i>	All students take computer graphics as an arts requirement. Students may also select from Art, Band, Jazz Band, Chorus, and Music Production.			
PE AND HEALTH	All students must take .5 Credits of PE and .5 Credits of Health.			

STUDENT RESEARCH AND INTERNSHIPS:

- 18% of the students in our senior class have completed an in-depth research experience or internship.
- Research and Internship experiences are available for our students at Ohio State University, COSI, and Nationwide Children's Hospital amongst others.
- Examples of Ohio State University labs where student research has been conducted include: Comprehensive Cancer Center, Nuclear Reactor Lab, Electro-Science Lab, and many more.

GRADE INTERPRETATION

It is the policy of St. Charles Preparatory School not to rank students.

GRADE SCALE:

A = 90-100 = 4.0	C = 70-74 = 2.0-2.4
B+ = 85-89 = 3.5-3.9	D+ = 65-69 = 1.5-1.9
B = 80-84 = 3.0-3.4	D = 60-64 = 1.0-1.4
C+ = 75-79 = 2.5-2.9	F = below 60 = 0

St. Charles calculates GPAs based on numeric class grades.

For example:

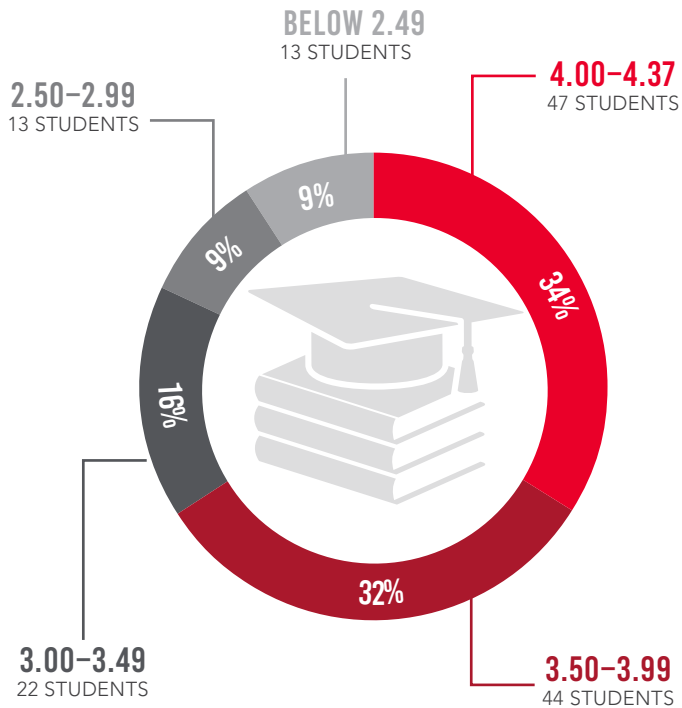
80%=3.0	83%=3.3	86%=3.6	89%=3.9	91%=4.0
81%=3.1	84%=3.4	87%=3.7	90%=4.0	92%=4.0
82%=3.2	85%=3.5	88%=3.8	99%=4.0	

Note:

GPA WEIGHTING

- Honors Courses receive a .5 weight increase.
- AP courses receive a 1.0 weight increase.
- Students taking a second course in the same subject (math, science, English, or foreign language) receive a .5 weight increase.

GRADE DISTRIBUTION CLASS OF 2022:



TEST SCORE INTERPRETATION

ACT DATA: CLASS OF 2021 (most recent available data)

Number of students tested: 134

	ST. CHARLES	OHIO	NATIONAL
Mean Score:			
ACT Composite	28.1	19.9	20.7
ACT English	28.0	19.3	20.1
ACT Math	27.6	20.3	20.4
ACT Reading	28.2	20.8	21.2
ACT Science	28.0	20.4	20.6

Middle 50th Percentile:

ACT Composite	25-32
---------------	-------

SAT DATA: CLASS OF 2021

Number of students tested: 41

	ST. CHARLES	OHIO	NATIONAL
Mean Score:			
ERW	642	536	528
Math	641	534	523
Total	1283	1070	1051

Middle 50th Percentile:

ERW	600-670	580-690	1170-1340
-----	---------	---------	-----------

ERW Math Total

NATIONAL MERIT TEST RESULTS:

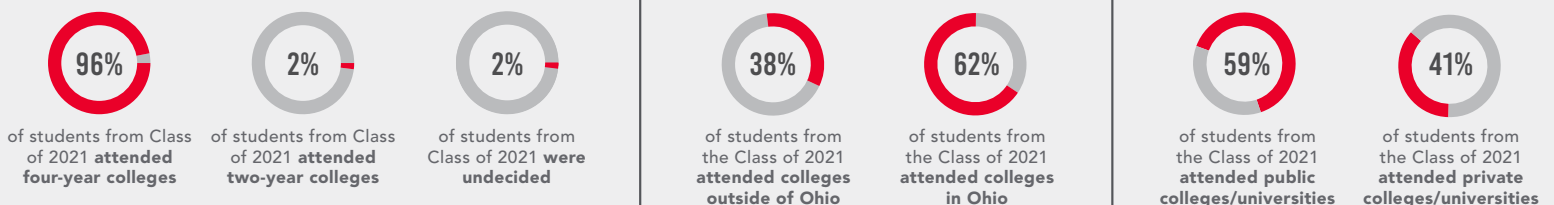
Year	Commended	Semifinalists	Finalist
17-18	20	4	4
18-19	5	6	6
19-20	9	9	9
20-21	9	5	4
21-22	13	9	TBD

2021 AP TEST RESULTS:

AP COURSES: Except where annotated (*) all students taking an AP class must take the AP exam.

	# of students	Avg. Score	% above 3
English Language (*)	53	3.79	91%
English Literature	5	4.60	100%
Latin	43	3.79	100%
Calculus AB	97	3.33	69%
Calculus BC	37	3.97	97%
Biology	27	4.19	100%
Chemistry	22	4.55	100%
Physics 1	15	3.19	87%
Physics 2	15	3.33	80%
Physics C: (E-M)	4	4.50	100%
Physics C: Mech.	5	3.80	80%
US History	15	3.73	87%
Economics (1 st Year)	27	1.74	22%

ST. CHARLES COLLEGE MATRICULATION CLASS OF 2021



2021 COLLEGE ACCEPTANCES AND MATRICULATIONS (BOLD)

The University of Akron
The University of Alabama
 Allegheny College
 American University
 Appalachian State
 Arizona State University
 University of Arizona
Ashland University
 Auburn University
 Ave Maria University
 Baldwin Wallace University
 Baylor University
 Bellarmine University
 Benedictine College
 Bluffton College
Boston College
 Boston University
Bowling Green State University
 Bradley University
 Bucknell University
 Butler University
California University of PA
U of California San Diego
 Capital University
Cardiff Metropolitan U - UK
Case Western Reserve University
 Catholic University of America
 University of Central Florida
 Central Michigan University
 Centre College
 Chapman University
University of Cincinnati
 University of Cincinnati-Blue Ash
 The Citadel
 Clarkson University
Clemson University
 Cleveland State University
Colby College
University of Colorado at Boulder
Colorado State University
Columbia College of Chicago
Columbus State Community College
Cornell University
 Creighton University
University of Dallas
 Dartmouth College
University of Dayton
Denison University
 University of Denver
 DePaul University
 DePauw University
 Duquesne University
 Elon University
 Emory University
 University of Evansville
Fairleigh Dickinson U - Metropolitan
 Florida Gulf Coast University
 Florida Institute of Technology
 Florida State University
 Fordham University
Franciscan U of Steubenville
Frontier Community College
 Furman University
 Gannon University
 George Mason University

High Point University
 Hillsdale College
 Hiram College
 Hocking College
 Hofstra University
Hult Intl. Business School - London
 Illinois Institute of Technology
 IUPUI
Indiana University-Bloomington
Iona College
 University of Iowa
James Madison University
 John Carroll University
 John Paul the Great Catholic Univ.
Johns Hopkins University
Kansas State University
 University of Kansas
 Kent State University
University of Kentucky
Kenyon College
 Kutztown University of PA
 Lafayette College
 Lake Erie College
 Lenoir-Rhyne University
 Louisiana State University
 University of Louisville
 Loyola Marymount University
 Loyola University Chicago
 Madonna University
Malone University
 Marquette University
 University of Maryland-Baltimore County
 U of Massachusetts - Amherst
 Mercyhurst University
Miami University-Oxford
 University of Miami
 Michigan State University
 University of Michigan
 University of Missouri-Columbia
 Montana State University
 Morehead State University
 Mount Saint Mary's Univ.
 University of Nebraska
 U of North Carolina Chapel Hill
 University of North Dakota
 Northern Arizona University
 Northern Kentucky University
Northumbria University - UK
 Norwich University
 Notre Dame College
University of Notre Dame
Ohio Dominican University
 Ohio Northern University
Ohio University
Ohio University, Lancaster
Ohio Wesleyan University
 University of Oklahoma
 Oregon State University
 Otterbein University
Pennsylvania State University
Pepperdine University
University of Pittsburgh
Pontifical College Josephinum
 University of Portland
Purdue University
 Rider University

University of Rochester
 Rollins College
 Rose-Hulman Institute of Technology
 Rutgers University
 Ryerson University (CAN)
University of Saint Francis - FW
 Saint Leo University
 Saint Louis University
 Saint Michael's College
 San Diego State University
 Seton Hall University
University of South Carolina
Southern Methodist University
 Southwestern University
 St. John's University
 University of St. Thomas
 Stevens Institute of Technology
 SUNY College of Environmental Science
SUNY College at Geneseo
 University of Tampa
 University of Tennessee
Texas A&M University
 Texas Tech University
The Ohio State University
The Ohio State University at Newark
 Tiffin University
University of Toledo
 University of Toronto
 Union College
 University of Mount Union
 University of Utah
 Valparaiso University
 Vanderbilt University
 Villanova University
 Virginia Tech
 Wake Forest University
Walsh University
 Washington & Jefferson College
 Washington State University
 West Virginia University
 Western Kentucky University
 Western Michigan University
University of Wisconsin
Wittenberg University
 The College of Wooster
Wright State University
Xavier University
Yale University
 Youngstown State University



COLLEGES ADMITTED

191

COLLEGES ATTENDING

61



St. Charles Preparatory School
 THE DISTINCTIVE LEADER IN CATHOLIC EDUCATION