



St. Charles

PREPARATORY SCHOOL

— BUILDING BETTER MEN —

2022 - 2023 SCHOOL PROFILE

SCHOOL CODE: 361595

SCHOOL OVERVIEW:

St. Charles Preparatory School represents the breadth of economic and ethnic backgrounds from the greater Columbus area.

Our state of the art 29 acre campus is open to any young man who wishes to pursue study in this challenging and faith-focused environment.

Since its founding in 1923, St. Charles Preparatory School has nurtured the minds and hearts of scholars, priests, entrepreneurs, executives, artists, musicians, doctors, legal professionals, and community leaders.

CLASSICAL EDUCATION:

A St. Charles classical education is designed to provide students with the intellectual and moral facility to think independently. Critical thinking, problem solving, questioning, and research are emphasized throughout a rigorous curriculum.

Beyond the mere acquisition of information, the school strives to cultivate lifelong learners - individuals who are motivated to continue learning and who have the skills and discipline to do so.

While a liberal arts background is primary at St. Charles, special talents and inclinations are nourished and promoted.

FACULTY:

37 teaching faculty

Average years of teaching experience:
20.1 years, 13.7 at St. Charles

81% hold advanced degrees
(Masters/Doctoral)



Students from **56** different zipcodes

93 middle/grade schools are represented

DID YOU KNOW...

St. Charles is ranked #2 in the state for test score averages by Gerber Analytics. (most recent data)

Juniors increased their state predicted ACT scores by an average of 3.2 points when compared to their freshman Pre-ACT scores.

FINANCIAL AID:

68% of St. Charles students receive need-based or merit-based tuition assistance.

St. Charles will award \$1.3 million in need based tuition assistance and \$526,323 (includes Charism) in academic aid in 2022 - 2023.

COLLEGE GUIDANCE STAFF:

Mr. Jeff Stahlman
College Counselor
p. 380-209-2224
jstahlman@scprep.org

Mr. Thomas Giles
College & School
Counselor/Advisor
p. 380-209-2229
tgiles@scprep.org

Mr. David Breckenridge
Research Programming &
Military Outreach
p. 380-209-2227
dbreckenridge@scprep.org

College Guidance Office
p. 380-209-2223
guidance@scprep.org

Ms. Kristen Dickerson
College & School
Counselor/Advisor
p. 380-209-2226
kdickerson@scprep.org

Mr. Zach Wright
Freshman Advisor
p. 380-209-2225
zwright@scprep.org

Ms. Trisha Smith
Guidance Secretary
guidance@scprep.org

James Lower
Principal

John O'Neil
Vice Principal for
Academics

Richard Ey
Vice Principal for
Student Services

Edward Gruber
Vice Principal for
Learning Formation

David Lawler
Athletic Director



OUR MISSION

St. Charles is an all-boys college preparatory Catholic high school of the Diocese of Columbus, Ohio, that instills in its graduates the importance of prayer, faith, service, character, and hard work in an environment that values diversity, accountability and excellence and that creates an enduring tradition of brotherhood.

ESTABLISHED
1923

GRADES TAUGHT
9 - 12

STUDENTS ATTENDING
506

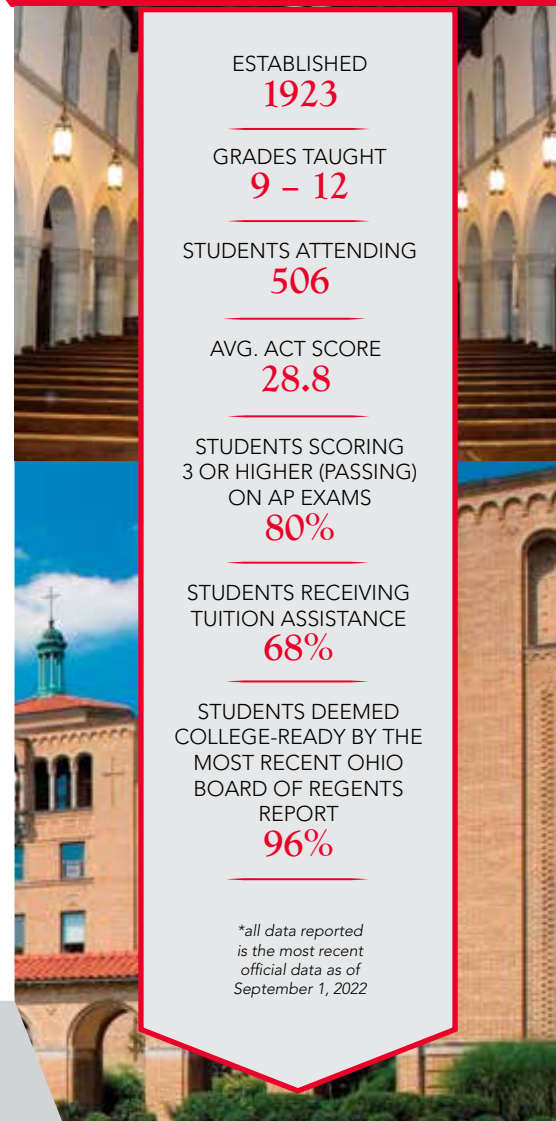
AVG. ACT SCORE
28.8

STUDENTS SCORING
3 OR HIGHER (PASSING)
ON AP EXAMS
80%

STUDENTS RECEIVING
TUITION ASSISTANCE
68%

STUDENTS DEEMED
COLLEGE-READY BY THE
MOST RECENT OHIO
BOARD OF REGENTS
REPORT
96%

*all data reported
is the most recent
official data as of
September 1, 2022



St. Charles Preparatory School

2010 E. Broad Street
Bexley, OH 43209-1665
p. 380-209-2222

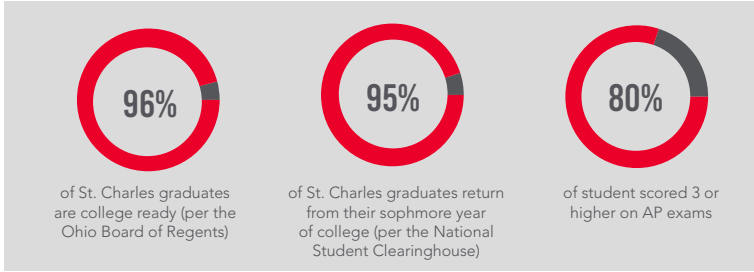
www.stcharlesprep.org

ACADEMIC PROGRAM

RIGOR AT ST. CHARLES PREPARATORY SCHOOL

Our teachers value rigor and challenge. A recent analysis shows the following grade information:

- It is rare for students to graduate with all grades of A on a transcript. Nearly all of the top 5% of our graduates over the past five years have received one or more grades of B.
- Students graduating in the top 10% of our senior class will often have several grades of B and possibly a C on their transcript.
- Our students increased their state predicted ACT scores by an average of 3.2 points when compared to their freshman Pre-ACT.



DISTINCTIONS OF THE RIGOROUS ST. CHARLES CURRICULUM

Students at St. Charles do not have the option to take an AP course prior to junior year, except under unique circumstances.

- **WORLD LANGUAGE**
 - Level three Latin is AP Latin.
 - Level four Latin 2101 is taken at The Ohio State University.
- **MATHEMATICS**
 - Students with an 85 in Algebra II/Honors Algebra II go directly to AP Calculus AB.
 - AP Calculus BC and AP Statistics are taught as one combined class.
 - The percentage students earning three and above on the Calculus BC exam is 85%. The percentage students earning three and above on the AP Statistics exam is 77%.
- **SCIENCE**
 - Chemistry and Physics are taught at a true Honors level because all students complete basic Chemistry and Physics as freshman.
 - For students to take an AP Science course (AP Biology, AP Chemistry, or AP Physics) they must take the prerequisite course in that subject prior to the AP course.
 - All students who take AP Physics take the AP Physics 1 and 2 exams, many will take Physics C *E+M) and Physics C (Mech).
- **ENGLISH**
 - All juniors take AP English Language.

AP CLASSES AT ST. CHARLES:

- | | |
|-----------------------|--------------------------------|
| AP BIOLOGY | AP ENGLISH LANGUAGE (11) |
| AP CALCULUS AB | AP ENGLISH LITERATURE (12) |
| AP CALCULUS BC | AP LATIN |
| AP CHEMISTRY | AP PHYSICS (level I & 2 exams) |
| AP COMPUTER SCIENCE A | AP STATISTICS |
| AP ECONOMICS | AP US HISTORY |
| | AP WORLD HISTORY |

HONOR COURSES AT ST. CHARLES:

- HONORS ALGEBRA 2
- HONORS CHEMISTRY
- HONORS GEOMETRY
- HONORS PHYSICS

	9	10	11	12
ENGLISH <i>4 units required</i>	Freshman English	Sophomore English	AP English Language	Senior English, AP English Literature
MATH <i>4 units required</i>	Algebra 1 Geometry, Honors Geometry	Geometry, Honors Geometry, Algebra 2, Honors Algebra 2	Algebra 2, Honors Algebra 2, Pre-Calculus	Pre-Calculus, AP Calculus AB, AP Calculus BC, AP Statistics
SCIENCE <i>4 units required</i>	Introduction to Physics and Chemistry	Biology	Honors Chemistry	Honors Physics, AP Biology, AP Chemistry, AP Physics
SOCIAL STUDIES <i>3 units required</i>	U.S. History	U.S. Government and Economic	—	World History, AP U.S. History, AP Economics, AP World History
WORLD LANGUAGE <i>4 units required (1 in Latin required)</i>	Latin 1	Latin 2	AP Latin, French 1, Spanish 1	Ohio State Latin 2101, French 2, Spanish 2
RELIGION <i>4 units required</i>	Freshman Religion	Sophomore Religion	Junior Religion	Senior Religion
COMPUTER SCIENCE	—	—	AP Computer Science	AP Computer Science
FINE ARTS <i>1 unit required</i>	All students take computer graphics as an arts requirement. Students may also select from Art, Band, Jazz Band, Chorus, and Music Production.			
PE AND HEALTH	All students must take .5 Credits of PE and .5 Credits of Health.			

RESEARCH AND INTERNSHIPS:



- 18% of the students in our senior class have completed an in-depth research experience or internship.
- Research and internship experiences are available for our students at The Ohio State University, Center of Science and Industry, and Nationwide Children's Hospital amongst others.
- Examples of The Ohio State University labs where student research has been conducted include: Comprehensive Cancer Center, Nuclear Reactor Lab, Electro-Science Lab, and many more.

GRADE INTERPRETATION

It is the policy of St. Charles Preparatory School not to rank students.

GRADE SCALE

A = 90-100 = 4.0	C = 70-74 = 2.0-2.4
B+ = 85-89 = 3.5-3.9	D+ = 65-69 = 1.5-1.9
B = 80-84 = 3.0-3.4	D = 60-64 = 1.0-1.4
C+ = 75-79 = 2.5-2.9	F = below 60 = 0

St. Charles calculated GPAs based on numeric class grades.

For example:

80% = 3.0	83% = 3.3	86% = 3.6	89% = 3.9	91% = 4.0
81% = 3.1	84% = 3.4	87% = 3.7	90% = 4.0	92% = 4.0
82% = 3.2	85% = 3.5	88% = 3.8	99% = 4.0	

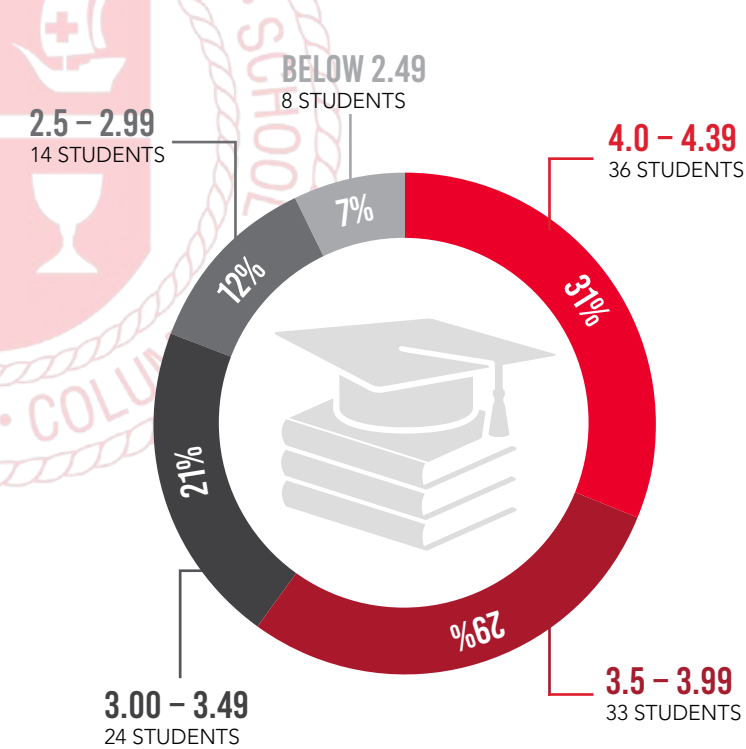
Note:

91% = 4.0
92% = 4.0
99% = 4.0

GPA WEIGHTING

- Honors Courses receive a 0.5 weight increase.
- AP Courses receive a 1.0 weight increase.
- Students taking a second course in the same subject (math, science, English, or foreign language) receive a 0.5 weight increase.

GRADE DISTRIBUTION CLASS OF 2022:



TEST SCORE INTERPRETATION

ACT DATA: CLASS OF 2022

Number of students tested: 135

Mean Score:	ST. CHARLES	OHIO	NATIONAL
ACT Composite	28.8	19.9	22.5
ACT English	29.3	19.3	22.1
ACT Math	28.4	20.3	21.8
ACT Reading	29.5	20.8	23.2
ACT Science	28.9	20.4	22.4

Middle 50th Percentile:

ACT Composite	25 - 33
---------------	---------

SAT DATA: CLASS OF 2022

Number of students tested: 47

Mean Score:	ST. CHARLES	OHIO	NATIONAL
ERW	653	525	533
Math	666	523	528
Total	1319	1048	1060

Middle 50th Percentile:

600-670	600-680	1205-1430
ERW	Math	Total

NATIONAL MERIT TEST RESULTS:

Year	Commended	Semifinalists	Finalist
17 - 18	20	4	4
18 - 19	5	6	6
19 - 20	9	9	9
20 - 21	9	5	4
21 - 22	13	9	8

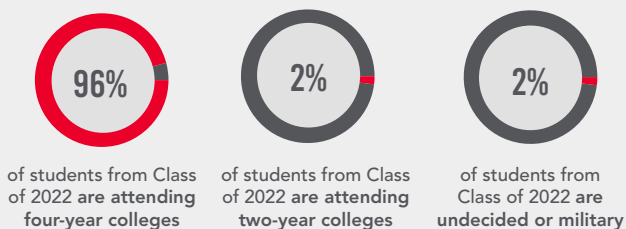
2022 AP TEST RESULTS:

AP COURSES: Except where annotated (*) all students taking an AP class must take the AP exam.

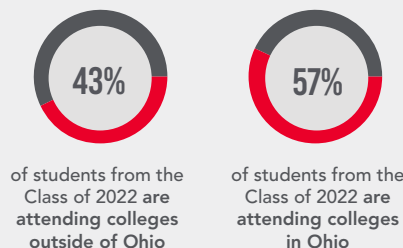
Subject	# of students	Avg. Score	% above 3
English Language (*)	43	3.67	91%
English Literature	10	4.7	100%
Latin	19	4.21	100%
Calculus AB	73	3.18	67%
Calculus BC	46	3.54	85%
Biology	35	4.29	100%
Chemistry	11	4.45	100%
Physics 1	26	4	92%
Physics 2	26	3.77	92%
Physics C: (E-M)	21	3.38	71%
Physics C: Mech.	21	3.95	100%
US History	6	3.5	83%
Statistics	75	3.16	77%

ST. CHARLES COLLEGE MATRICULATION CLASS OF 2022

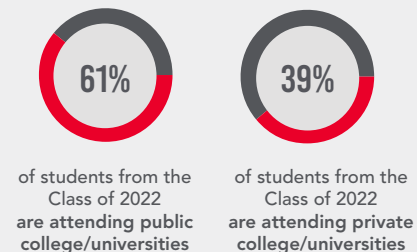
COLLEGE MATRICULATION



MOBILITY RATE



COLLEGE TYPE



COLLEGES WHERE ST. CHARLES PREPARATORY SCHOOL STUDENTS WERE ADMITTED CLASS OF 2022

The University of Akron
The University of Alabama
 American University
 Appalachian State
 Arizona State University
 University of Arizona
 Ashland University
Auburn University
 Baldwin Wallace University
 Baylor University
 Belmont University
 Benedictine College
 Bluffton College
 Boston College
Boston University
 Bowling Green State University
 Bradley University
 University at Buffalo
Butler University
California Lutheran University
 U of California Davis
Case Western Reserve University
 Centre College
University of Cincinnati
 Clarkson University
Clemson University
Cleveland State University
University of Colorado at Boulder
 Columbus College of Art & Design
Columbus State Community College
 Creighton University
Dartmouth College
 Davidson College
University of Dayton
 Denison University
 University of Denver
 DePaul University
DePauw University
 U of Detroit Mercy
 Drexel University
 Duke University
 Duquesne University
 Eastern Michigan University
 Elon University
 Embry-Riddle University
University of Findlay
 Florida Gulf Coast University
 Florida Institute of Technology
 Fordham University
 Franciscan U of Steubenville
 Furman University
 Gannon University
George Washington University
 Georgia Institute of Technology
 Gettysburg College
Gonzaga University
 Hartwick College
 Hendrix College
 High Point University
 Hofstra University
 Hood College
Howard University

Indiana University-Purdue University Indianapolis
Indiana University-Bloomington
 James Madison University
John Carroll University
 Kalamazoo College
Kansas State University
 University of Kansas
 Kent State University
University of Kentucky
 Kettering College
 Lafayette College
 Lewis and Clark College
 Louisiana State U (LSU)
 U. of Louisville
Loyola University Chicago
 Loyola University Maryland
 Marietta College
 Marquette University
 Maryland Institute of Art
Miami University-Oxford
 University of Miami
 Michigan State University
Michigan Technological Univ.
 University of Michigan
University of Minnesota
University of Mississippi
 Morehouse College
Muskingum University
University of Nebraska
 New Jersey Institute of Tech.
 North Carolina A&T
 U of North Carolina Chapel Hill
 U of North Carolina Charlotte
 North Carolina State
 Northern Kentucky University
Northumbria University – UK
Northwestern University
University of Notre Dame
Ohio Dominican University
Ohio Northern University
Ohio University
Ohio Wesleyan University
University of Oklahoma
 University of Oregon
 Oregon State University
 Otis College of Art & Design
 Otterbein University
Pennsylvania State University
 Pepperdine University
 University of Pittsburgh
 Point Park University
Pontifical College Josephinum
 Providence College
 University of Puget Sound
Purdue University
 Purdue University – Fort Wayne
 Rensselaer Polytechnic University
 University of Richmond
 Rochester Institute of Technology
 Rollins College
 Rose-Hulman Institute of Technology

St. Francis University
University of Saint Francis -FW
Saint Joseph's University
Saint Louis University
 Salve Regina University
 San Diego State University
 University of San Francisco
Santa Clara University
School of Art Inst. Chicago
 School of Visual Arts
 Seattle University
Shenandoah University
 University of South Carolina
 University of South Florida
 St. Bonaventure University
 Stanford University
 Stevens Institute of Technology
 Syracuse University
 University of Tampa
 University of Tennessee
Texas A&M University
 Texas Christian University (TCU)
University of Texas Austin
University of Texas Dallas
The Ohio State University
The Ohio State University at Newark
Thomas More University
Tiffin University
University of Toledo
 University of Toronto
 Tulane University
United State Military Academy
West Point
 Ursinus College
 University of Utah
 Valparaiso University
 University of Vermont
Villanova University
 Virginia Tech
 Wake Forest University
Walsh University
Washington and Jefferson Coll.
 West Virginia University
 William and Mary College
 Wilmington College
University of Wisconsin
Wittenberg University
 Wofford College
 Worcester Polytechnic Univ.
 The College of Wooster
 Wright State University
Xavier University
 Youngstown State University

BOLD = Student(s) Attending



COLLEGES ADMITTED

180

COLLEGES ATTENDING

62

